

# Anti-ROR1 hIgG1

## Antibody(Zilovertamab/Cirmtuzumab)

### Product information

GM-48031AB-10	10 µg
GM-48031AB-100	100 µg
GM-48031AB-1000	1 mg

### Antibody Information

Species Reactivity	Human; Cynomolgus; Mouse
Clone	Zilovertamab/Cirmtuzumab
Source/Isotype	Monoclonal human IgG1, κ
Application	Flow cytometry
Specificity	Detects ROR1
Gene	ROR1
Other Names	NTRKR1, dJ537F10.1
Gene ID	NM_005012.4 (Human); XM_015434778.1 (Cynomolgus) ; NM_013845.5 (Mouse)
Background	This gene encodes a receptor tyrosine kinase-like orphan receptor that modulates neurite growth in the central nervous system. The encoded protein is a glycosylated type I membrane protein that belongs to the ROR subfamily of cell surface receptors. It is a pseudokinase that lacks catalytic activity and may interact with the non-canonical Wnt signalling pathway. This gene is highly expressed during early embryonic development but expressed at very low levels in adult tissues. Increased expression of this gene is associated with B-cell chronic lymphocytic leukaemia.
Storage	Store at 2-8°C short term (1-2 weeks).Store at ≤ -20°C long term. Avoid repeated freeze-thaw.
Formulation	Phosphate-buffered solution, pH 7.2.
Endotoxin	< 1 EU/mg, determined by LAL gel clotting assay

## Data Examples

Flow cytometry

H\_ROR1 CHO-K1 Cell Line (Catalog # GM-C19169) was stained with Anti-ROR1 hlgG1 Antibody (Catalog # GM-48031AB) or isotype control antibody, followed by anti-Human IgG APC-conjugated Secondary Antibody.

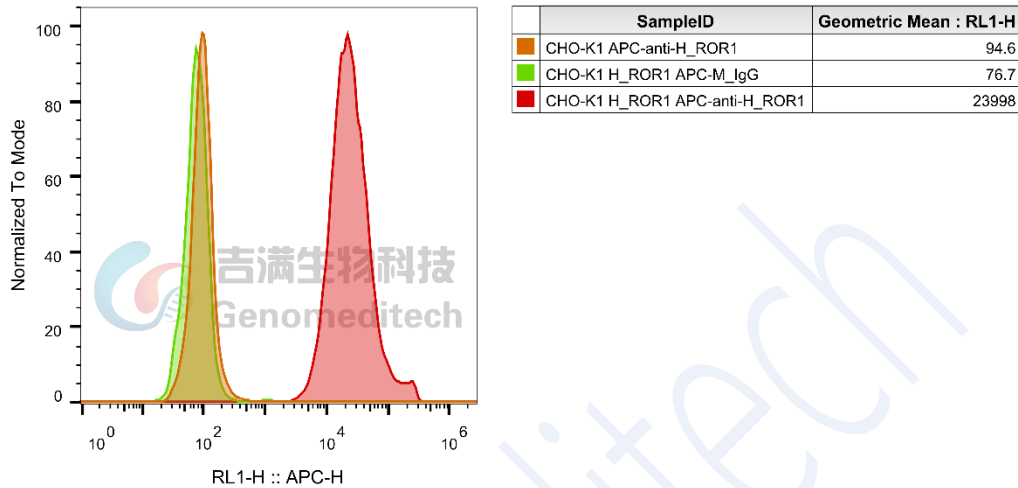


Fig. FACS

Flow cytometry

Cynomolgus\_ROR1 CHO-K1 Cell Line (Catalog # GM-C24586) was stained with Anti-ROR1 hlgG1 Antibody (Catalog # GM-48031AB) or isotype control antibody, followed by anti-Human IgG APC-conjugated Secondary Antibody.

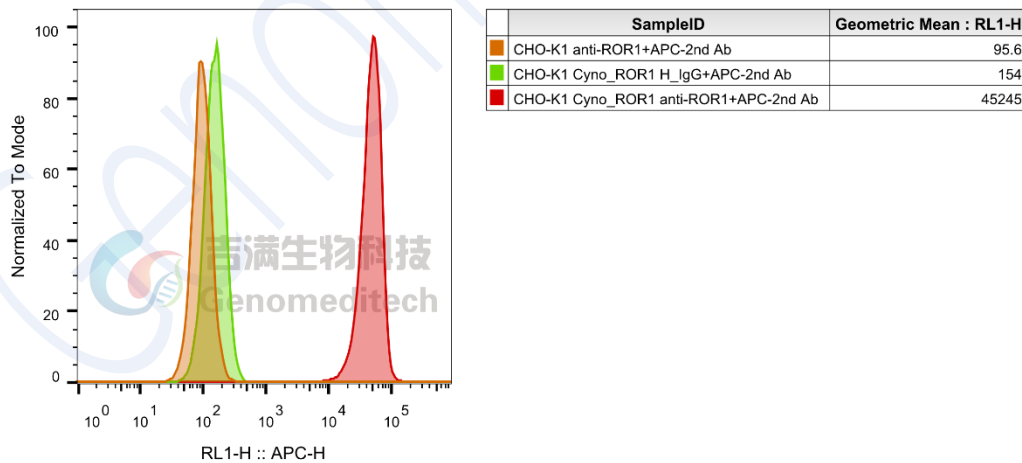
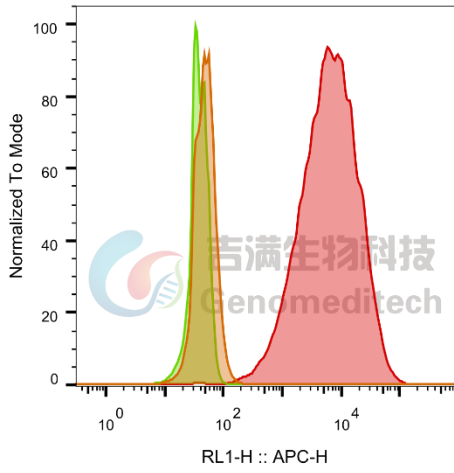


Fig. FACS

Flow cytometry

Mouse\_ROR1 CHO-K1 Cell Line (Catalog # GM-C24588) was stained with Anti-ROR1 hlgG1 Antibody (Catalog # GM-48031AB) or isotype control antibody, followed by anti-Human IgG APC-conjugated Secondary Antibody.



SampleID	Geometric Mean : RL1-H
CHO-K1 anti-ROR1+APC-2nd Ab	48.8
CHO-K1 M_ROR1 H_IgG+APC-2nd Ab	39.0
CHO-K1 M_ROR1 anti-ROR1+APC-2nd Ab	5938

Fig. FACS

Genomeditech